

NEERAJ GOSWAMI

MEDITATIVE MOORINGS / A SOLO SHOW

THE ARTS HOUSE, SINGAPORE / 4-7 DEC, 2019

Terms & Conditions apply.

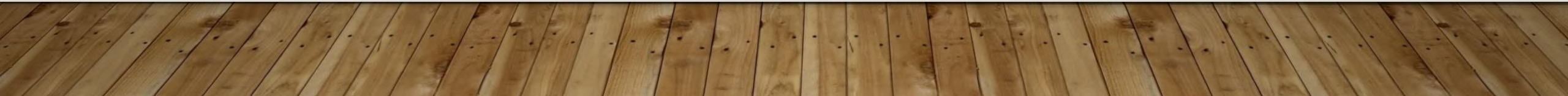
ABOUT – NEERAJ GOSWAMI

- Born in 1964 at Patna, he earned a bachelor's and master's degree in fine arts from Delhi College of Art.
- He received the Lalit Kala research grant fellowship in 1988.
- Goswami has also been in demand as a muralist and a portrait painter. He executed important portraits, particularly that of Hon'ble President Shri KR Narayanan for the Indian parliament.
- His works are part of museum and private collections in India and abroad like National Gallery of Modern Art (New Delhi), Apollo Group, Hero Group, Lanco Group, Max India, Adidas, Reliance Group etc.



PART I - CONSCIOUS ECHOES

Sculptures



Drop from the Ocean

10.5in x 10in x 13in

Bronze

2018

Limited Edition of 5

(Made in England)





“A brilliant sun emerging out of the cosmic waters is blessed by an angel hovering over it. Two wings are conceived as drops from the ocean, the source of creation, Brahma - the pure consciousness: hope for preservation of all the creation around us.”

- Neeraj Goswami

(Detail)

Young Girl with a Stole

12.5in x 11in x 11in

Bronze

2018

Limited Edition of 5

(Made in England)

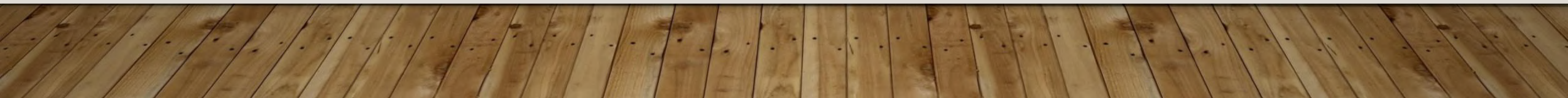




“My expression comes forth as a reaction to the crime and violence against the girl child in our society.

She is given a blanket of security in the form of a red stole to preserve and protect her innocence and vulnerability, covering her with a veil is a mark of love and compassion.”

- Neeraj Goswami



Beleaguered Angel

17in x 11.75in x 25in

Bronze

2018

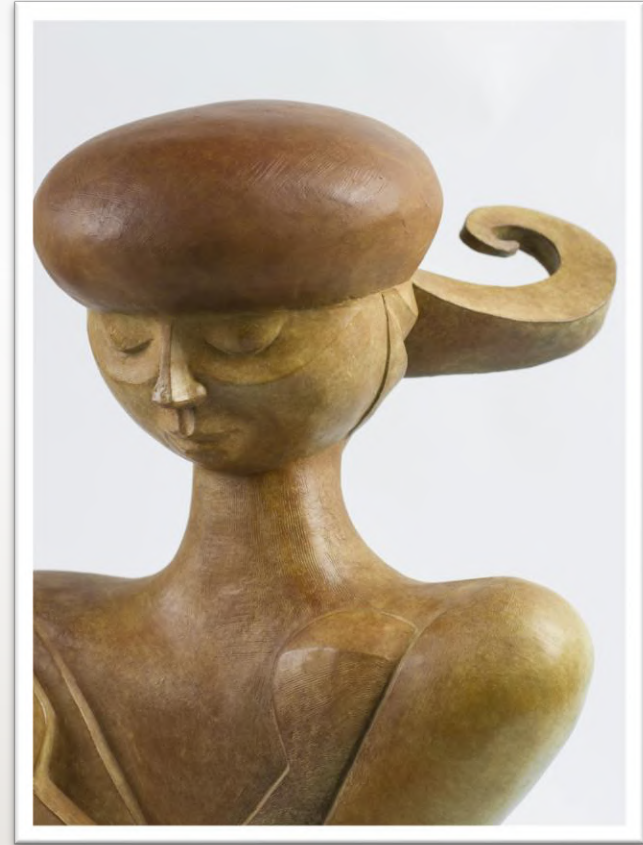
Limited Edition of 5

(Made in England)

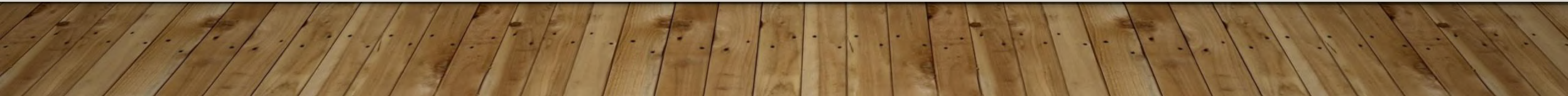




(Detail)



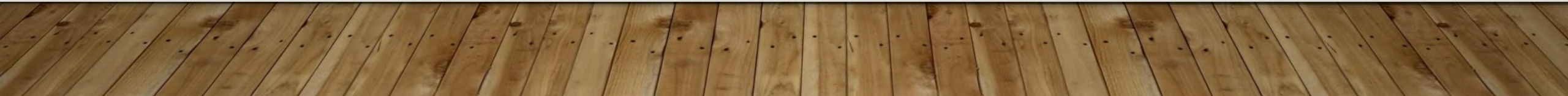
(Detail)





PART II - CATHEDRAL OF CONVERSATIONS

Paintings





'Manifested from the Unmanifest, Form from the Formless'

When you know the source, every moment becomes beautiful and joyful. Every happening in life is beautiful if you remain connected with the source of life.

The painting depicts various activities of life: be it journeys, a walk, a dance, introspection, daily chores, passion for something, so on and so forth. All activities are transformed into a state of bliss, to a higher plane, through connecting with the true self.

Life is beautiful

39in x 84in | Oil on Canvas | 2017

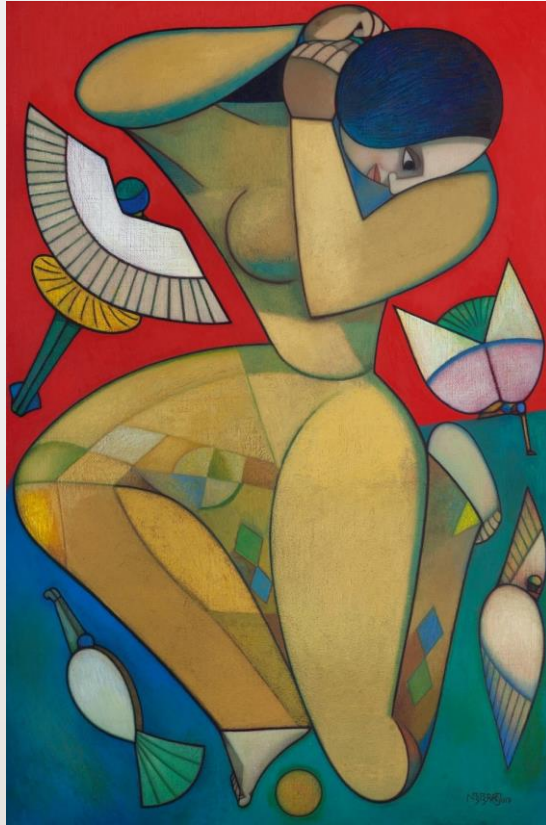
Bodh-Consciousness

72in x 48in

Acrylic on Canvas

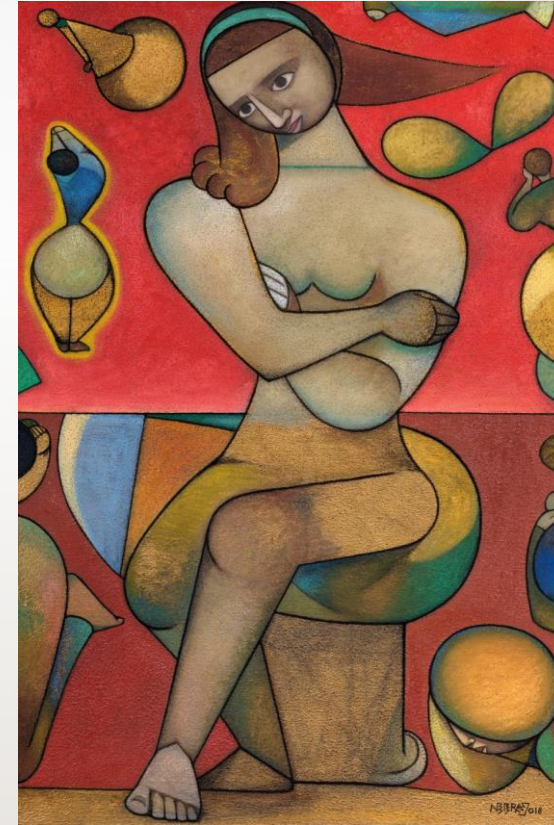
2019





Shringar (bedecked) in Space

36inx 24in | Oil on Canvas | 2017



Who am I

36in X 24in | Oil on Canvas | 2018



The Violin Player

42in x 48in | Oil on Canvas | 2018

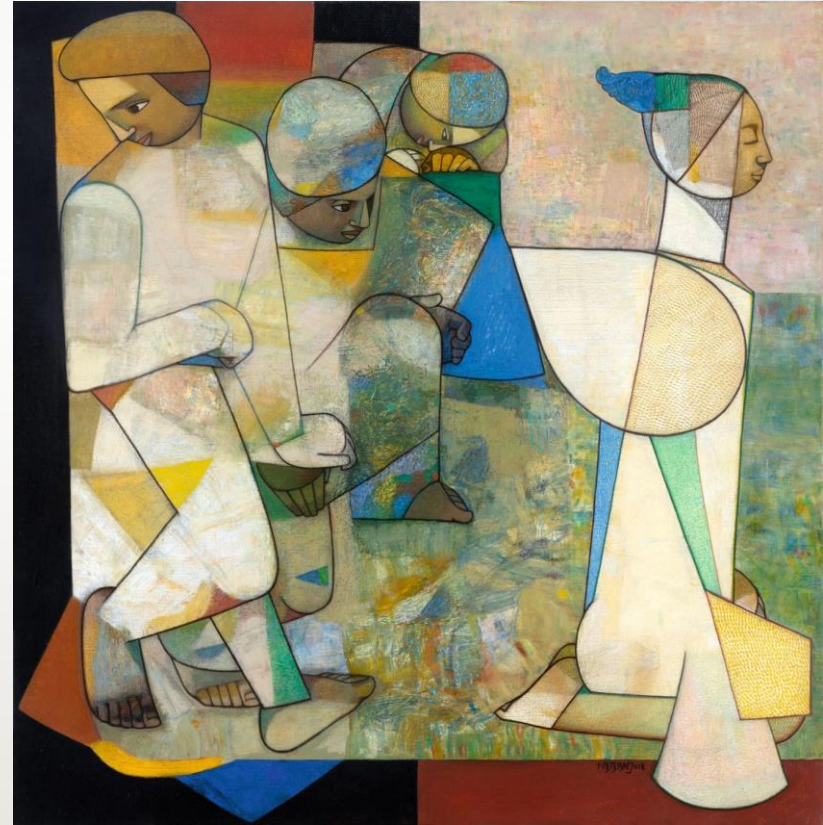
The portrait of The Violin Player plays with the co-existence of opposites in a softly lyrical linearity. The immersion into the notes of musicality can prove to be mystical as well as meandering within the moods of the initiation.

Over the years, he has softened the dynamism of his contours into a smooth tapering in which the figurative with its cubist renderings looks more like a vision that exists within it.



Happenings in Shunya (Space) - I

36in x 36in | Acrylic on Canvas | 2016



Moment of Awakening

36in x 36in | Oil on Canvas | 2018

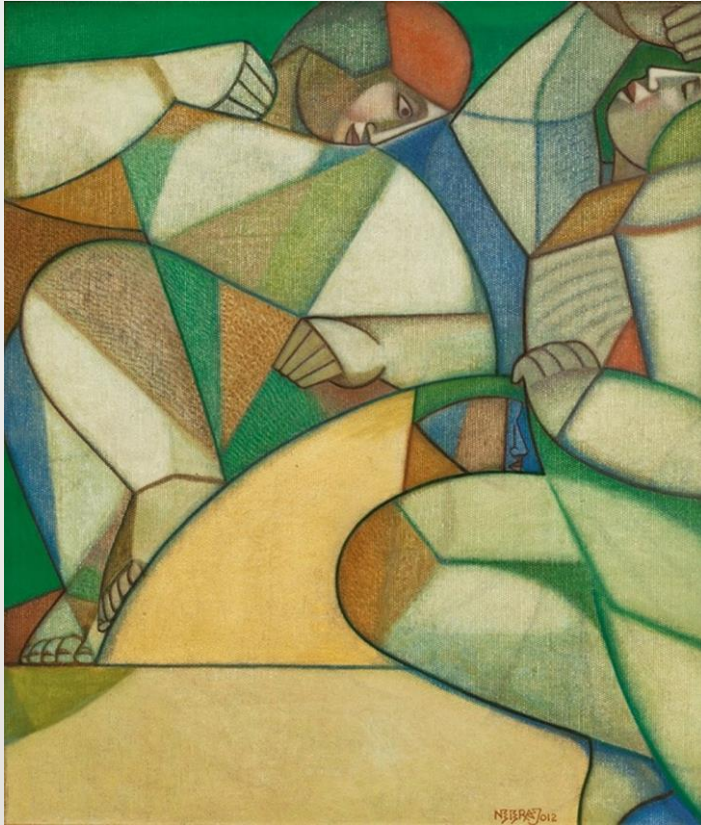


Wings

48in x 48in | Oil on Canvas | 2019

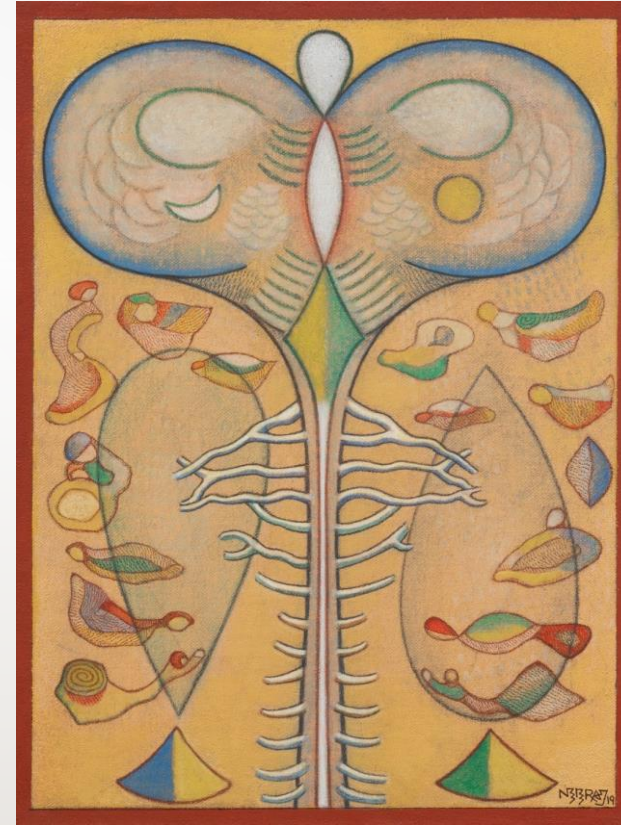
A symbol of transformation and transcendence to a higher blissful state of existence, Wings become a vehicle to reach the pinnacle of life.

The whiteness of the wing becomes the light of spiritual awakening, serene, pure and divine. Red being the light of the dawn - a new enlightened beginning, floating abstracted shapes in red space create rhythm of life, around the angelic presence bathed in golden light.



Rise

20in x 17in | Oil on Canvas | 2012



Tree of Life

16in x 12in | Acrylic on Canvas | 2019



Moon-Dot (Chandra Bindu)

60in x 96in | Oil on Canvas | 2018

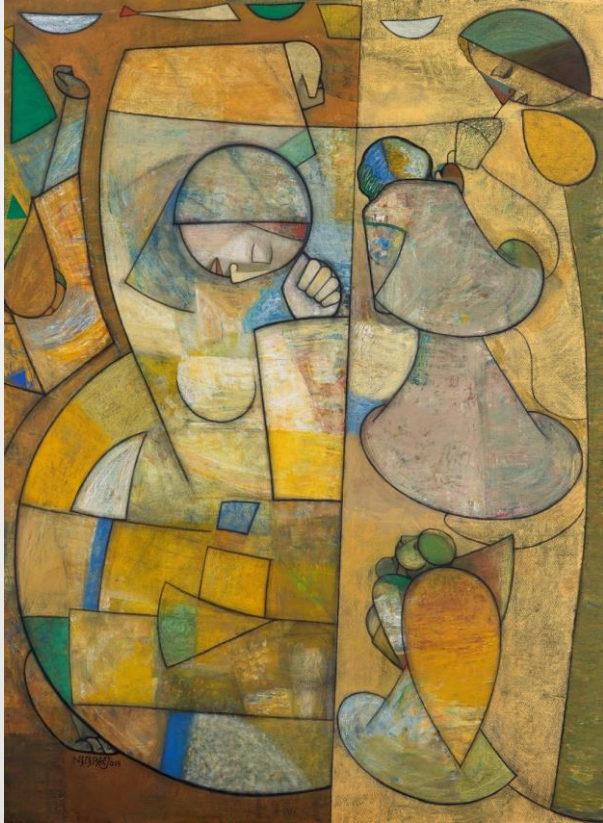
MOON-DOT (CONTD...)

-
- In this work you can see a golden curve and the *bindu* above it (human form like a *bindu* or dot), making it appear like a *chandrabindu*, the upper part of *Om* or *Pranav*. This work reflects that colour is a form of energy that can stimulate our senses and bring out a range of emotions. He stretches a myriad of colours over scattered geometries of gem-like hues to create refracted compositions.
 - The painting expresses Creation, coming out of the primordial sound *Om*. *Chandrabindu* or moon dot becomes a visual metaphor and the *Om* sound, an inspiration for the work. It stimulates to create rhythms, bringing forth the creation on canvas.
 - The rhythm follows the curve of *Chandrabindu* - the above part depicting the astral plane and the lower physical plane. Thus the *Om* created the subtle as well as the physical, as manifestations of the 'Formless Abstract Ultimate Reality'.



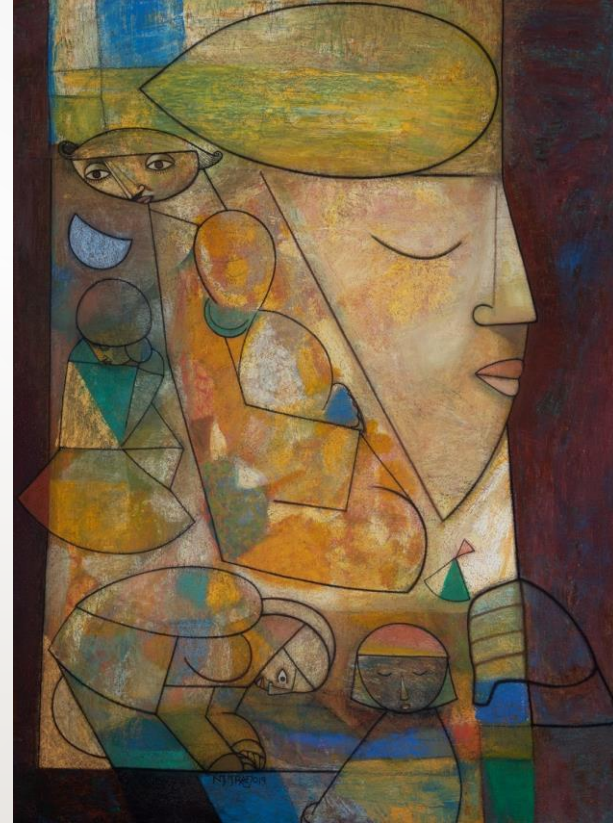
Chorus

36in x 48in | Acrylic on Canvas | 2014



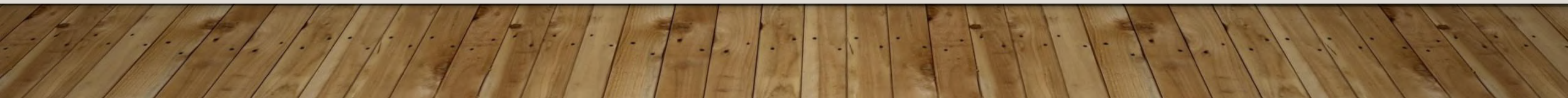
Fountain Of Bliss

48in x 36in | Acrylic on Board | 2019



Gnosis

48in x 36in | Acrylic on Board | 2019



ABOUT THE GALLERY



- Sanchit Art showcases the best of modern and contemporary Indian art and offers top-quality artworks by senior and master artists.
- Our exhibitions have set the benchmark for the quality of works, well-researched publications and the selection of artists we offer.
- Dipak Banerjee, Ganesh Pyne, GR Santosh, Jayasri Burman, Jogen Chowdhury, K. Laxma Goud, Lalu Prasad Shaw, Manoj Dutta, MF Husain, Paresh Maity, Ram Kumar, Satish Gujral and Thota Vaikuntam are some of the artists we represent.



For more information and price enquiries, please:

Contact Ritika @ +65-91522680 or
at ritika@phievents.com



ritika@phievents.com
www.phievents.com



Ritika Khattar