



METAPHORICAL DISTANCES

GROUP SHOW OF 10 INDIAN ARTISTS

JUNE 2024

Note: All works are for sale, prices upon request. Terms & Conditions apply.

Price Range, where specified is an approximate indication. Exact price is quoted upon request.

Ganesh Haloi | GR Santosh | Jogen Chowdhury
Lalu Prasad Shaw | Mahula Gosh | Manoj Dutta
Neeraj Goswami | P. Gopinath | Sujata Bajaj
Vinita Karim

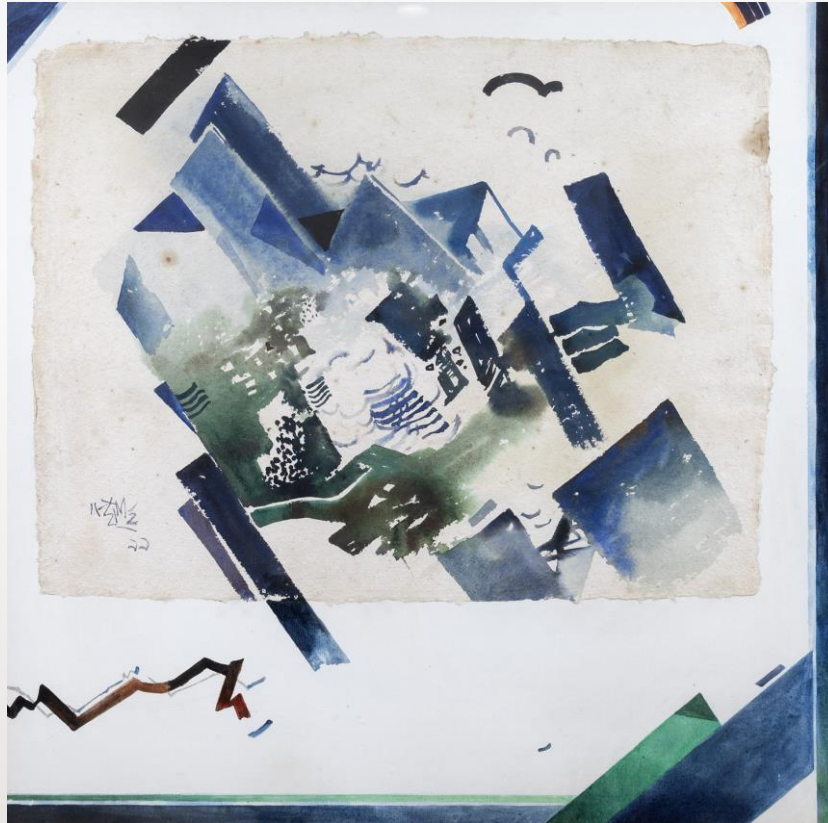


ABOUT - SANCHIT ART



- Sanchit Art showcases the best of Indian art and represents the top modern and contemporary Indian artists.
- Our exhibitions have set the benchmark for superior curation and work quality, well-researched gallery publications and excellent provenance.
- We exhibit in India and regularly participate in prestigious fairs and events at London, Singapore, Hong Kong and Dubai.





Ganesh Haloi

Landscape | 39" x 39" | Watercolour on Canvas & Paper | 1999

ENQUIRE NOW

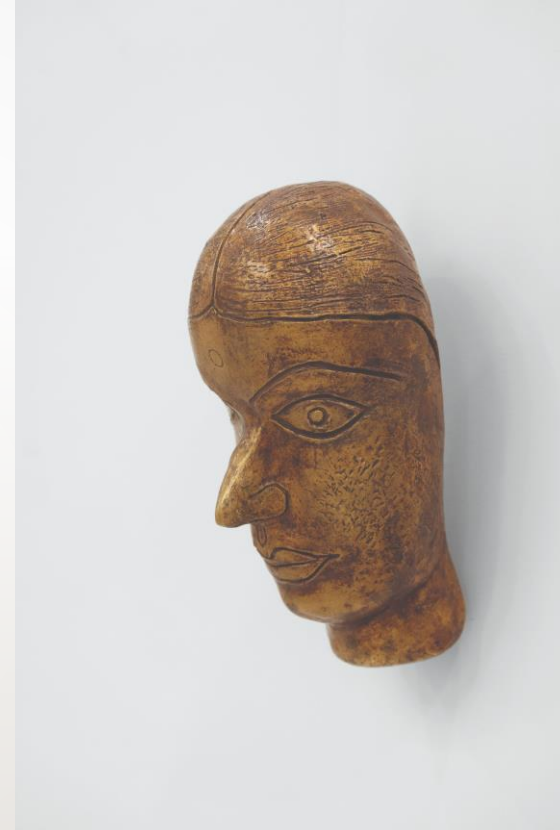


This poetic masterpiece breathes contemporary life into the timeless theme of motherhood, exquisitely capturing its essence. What makes this artwork even more intriguing is its reverse side, revealing a striking linear drawing portraying a scene from a bustling Kashmiri village. With its captivating geometric quality, rendered in the Cubist style, this piece adds a dynamic dimension to the composition. Santosh's genius shines through, reimagining the iconic motif of mother and child in a contemporary light.

GR Santosh

Mother and Child | 21" x 63" | Gouache on Paper | 1955

[ENQUIRE NOW](#)



Jogen Chowdhury

Untitled | Bronze | 12" x 16.5" x 6" | Edition of 10 Plus 1 Artist's Proof

ENQUIRE NOW



Jogen Chowdhury

Bird - I | Brush & Ink on Paper | 7" x 10.5" | 2021



Jogen Chowdhury

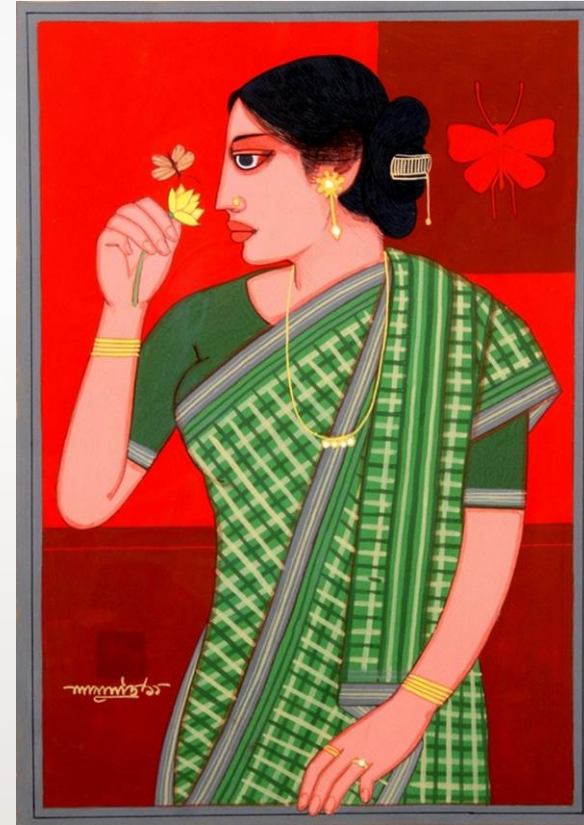
Bird - II | Brush & Ink on Paper | 7" x 10.5" | 2021

ENQUIRE NOW



Lalu Parsad Shaw

Untitled | 19.5" x 14" | Tempera | 2011



Lalu Parsad Shaw

Untitled | 19.5" x 14" | Tempera | 2011

ENQUIRE NOW



Like a hunting scene, this piece by artist Mahula Gosh has dynamism, a sense of speed, and ephemerality. There are varied forms fluidly dispersed over the pictorial plane, which exudes a sense of tension and is perhaps a way to reflect upon the complex relationship between man and nature. While there's spontaneity in her drawings, at the same time the colour palette is subdued and chalky, bestowing a very distinct characteristic on her work.

Mahula Gosh

Untitled | 42" x 36" | Acrylic on Canvas | 2014

[ENQUIRE NOW](#)



Manoj Dutta's Lady with Lotus is a mesmerizing portrait that captures the beauty and grace of a woman holding a lotus flower. The painting's vivid colour blue dominates the composition and intricate details of the pelicans and the lotus flower creates a sense of intimacy and serenity, drawing the viewer into the scene. On a careful look, the eyes are confronting the viewer as if telling the poignant tale of nature.

Manoj Dutta

Lady With the Lotus | 40" x 91" | Tempera on Board | 2019

[ENQUIRE NOW](#)



In Neeraj Goswami's work, the enchanting poetics of music are elegantly transmuted into a captivating visual experience. Within this artwork, a collective effusion of celebration and enlightenment unfolds, eloquently conveyed through the expressive tapestry of colors. This mesmerizing composition captures the hypnotic allure of music and dance, painting a vivid tableau of enchantment. The narrative unfolds as a musician gracefully plays a wind instrument, enveloping the scene in an aura of serene reverie.

Neeraj Goswami

In Love | 48" x 72" | Acrylic on Canvas | 2003

[ENQUIRE NOW](#)



P. Gopinath's artwork combines a number of elements from Indian tradition, but one of the most important things he explored was creating his own unique pictorial language based on the concepts of architectural versus pictorial space. He was heavily influenced by Madhubani paintings and Pahadi miniatures in this endeavour. His work is multi-layered, and one can spot aspects of Indian calligraphy, hybridised birds and animals, and even indications of more complex design components.

P. Gopinath

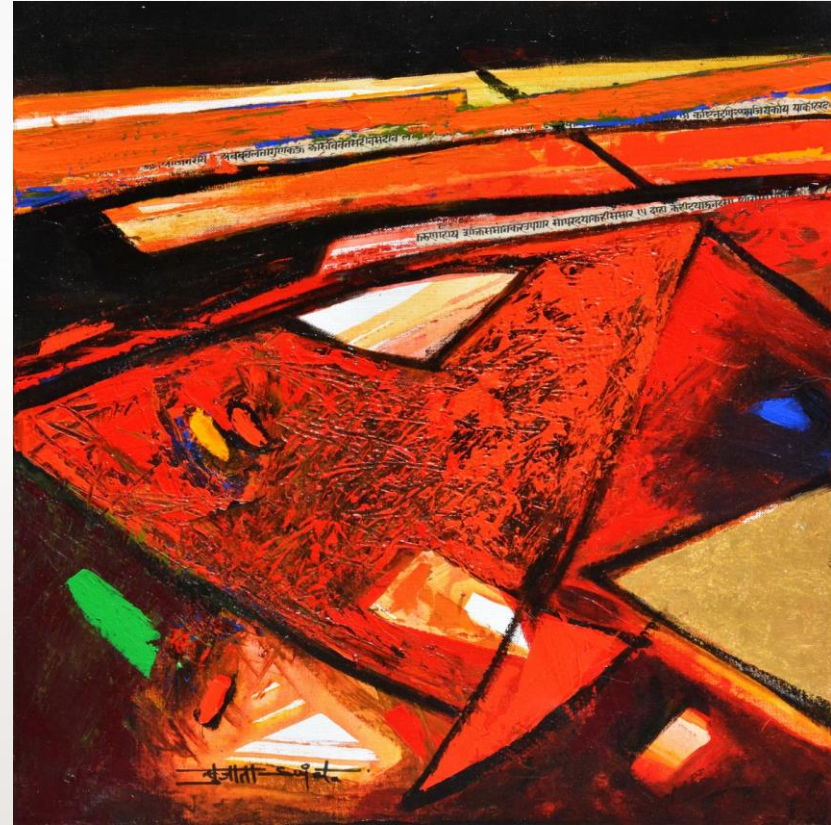
Untitled | 48" x 36" | Acrylic on Canvas | 2011

ENQUIRE NOW



Sujata Bajaj

Fragments | 20" x 20" | Acrylic on Canvas



Sujata Bajaj

Fragments | 20" x 20" | Acrylic on Canvas

ENQUIRE NOW



Vinita Karim

Where Dreams Live | 55" x 94" | Acrylic, oil, Gold & Copper on Linen | 2024

[ENQUIRE NOW](#)

WE ARE NOW ON ARTSY

Follow this link https://www.artsy.net/show/sanchit-art-metaphorical-distances?sort=partner_show_position and discover more Indian Artworks.



Sell or Swap

We acquire artworks of Indian modern masters and senior contemporaries, for the gallery collection. We can do an outright purchase or exchange it with another artwork. Should you wish to sell, or exchange, please get in touch for a no obligation valuation.*

Easy 4 step process

- Assessment
- Valuation
- Offer Acceptance & mode of sale
- Logistics & compliance

*Terms and conditions apply.

For more information and enquiries, please:

- ✓ On a mobile device, click the button to get the prices now



- ✓ Or, please [click here to drop us an email quickly](#)

T +91-11-41408010 | M +91-9599-290620 | E info@sanchitart.in

Sanchit Art, 167 DLF South Court, Saket, New Delhi – 110017

10am – 6pm; Sunday's, by appointment only

www.sanchitart.in

Follow us

