



ACROSS THE MODERN LINE

GROUP SHOW OF 12 INDIAN ARTISTS

DECEMBER 2025

Note: All works are for sale, prices upon request. Terms & Conditions apply.

Price Range, where specified is an approximate indication. Exact price is quoted upon request.



FN Souza | Ganesh Haloi | Ganesh Pyne

Lalu Prasad Shaw | Manoj Dutta | Satish Gujral

Seema Kohli | Shabir Hussain Santosh | Shanti Dave

Sujata Bajaj | S H Raza | Vinita Karim



Known for his powerful head studies, Souza's portraits are skilfully distorted, perhaps mirroring the inner-self of his subjects, through the artist's gaze. Executed with the unassuming tools of sketch-pens and inks, Souza's fascination with Fauvist techniques gave birth to portraits that are not only emotive but also surreal, carrying an undercurrent of disconcerting qualities. Souza skillfully portrays the subject's skin using jagged red lines, creating a striking contrast with the blue tones of the suit. This portrait transcends mere representation; it serves as a profound psychological exploration of a complex individual.

FN Souza

Untitled | 11" x 8.5" | Sketch Pen on Paper | 1983

ENQUIRE NOW



The green expanse on the left echoes the fertile lands of Barisal, Bangladesh — once Ganesh Haloi's home, now a distant memory. The black organic shapes resemble drifting seeds, symbolizing his sense of uprootedness and displacement. The blue on the right evokes flowing water, reflecting time, transition, and the eternal rhythm of the Brahmaputra River. Yellow corners suggest light as fragments of hope piercing through loss. Floating triangles, circles, and wavy strokes emerge as fragments of thought — silent scripts of remembrance. In this distilled geometry lies his deeply personal language of belonging.

Ganesh Haloi

Untitled | 19.5" x 30" | Gouache on Paper | 2023

[ENQUIRE NOW](#)



Ganesh Haloi

Untitled | 23" x 28" | Gouache on Paper | 2023

Rooted in a lifelong connection to riverine landscapes, Haloi conjures an immersive underwater world where sustenance and spirit flow as one. Growing up where rivers shaped livelihood and memory, his work honors unseen life beneath. Hazy greens and muted yellows evoke filtered light under surfaces, where life drifts gently. Scattered triangular forms suggest fish schools—symbols of sustenance, community, and rhythm. Layered textures mirror vegetation and silt, while faint white marks ripple like currents. Through this dreamlike realm, Haloi celebrates rivers' life-giving spirit that nourishes land and soul.

ENQUIRE NOW



"My childhood memories revolve around Kolkata. The sounds and smells of this city fill my being. I love Kolkata." Ganesh Pyne's drawing on grid paper is a labyrinthine exploration of introspection and critique. The cluttered yet deliberate strokes capture a bearded figure, evoking the contemplative presence of a prolific figure, amidst a series of enigmatic sketches. This artwork reflects Pyne's subtle commentary on socio-cultural themes, drawing viewers into an inescapable maze of thought and creation. Pyne's work blends reality and the surreal, evoking wonder and provoking deeper reflection.

Ganesh Pyne

Untitled | 10.25" x 8.25" | Pen and Ink on Paper

ENQUIRE NOW



In his quintessential style, Lalu Prasad Shaw depicts a woman at ease, wearing a red sari with a rhythmic green border that beautifully directs viewers' eyes throughout the surface. Her composed demeanour, while holding a palm leaf fan underscores grace, poise and a native nuance. Shaw's expertise in tempera painting adds life to this particular portrait, inculcating the spirit of classic Indian beauty. The tacit arrangement invites the observer to project their own experiences, converting this minimalist form into a screen of psychological depth and imagination.

Lalu Prasad Shaw

Untitled | 19.5" x 14.5" | Tempera | 2011

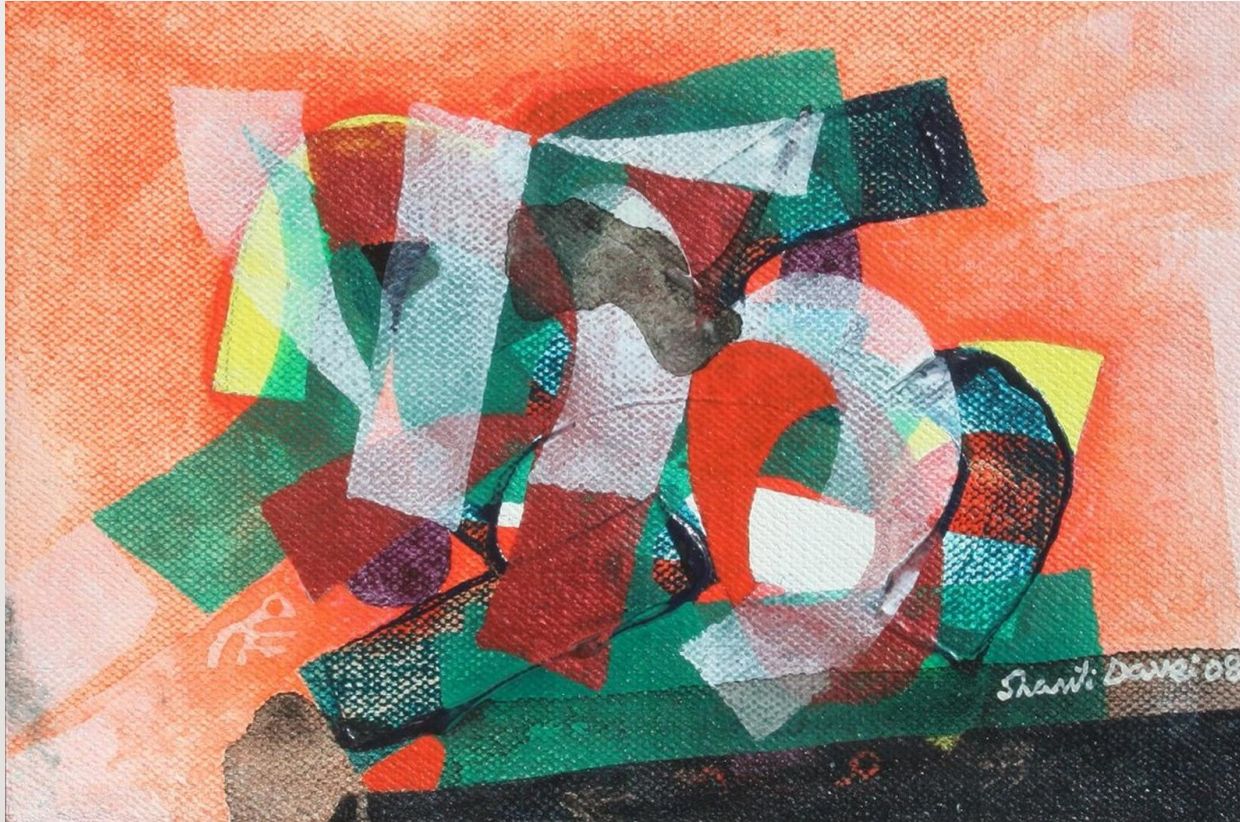
ENQUIRE NOW



Manoj Dutta

Affection (Triptych) | 40" x 64" | Tempera on Board | 2010

ENQUIRE NOW



Shanti Dave

Untitled | 5.1" x 7.7" | Oil on Canvas | 2008

Shanti Dave's works were based on modernism, which can be seen through his formal abstraction technique. The colours are vibrant and subtle, evoking a sense of mystery, and the calligraphy, arranged in an obscure way, became central to the composition of the muralist Shanti Dave, who combined western expressionism with Indian metaphysics. This work also carries impressions from the early years, as the artist worked as a commercial artist doing banners and sign boards at the start of his career.

ENQUIRE NOW

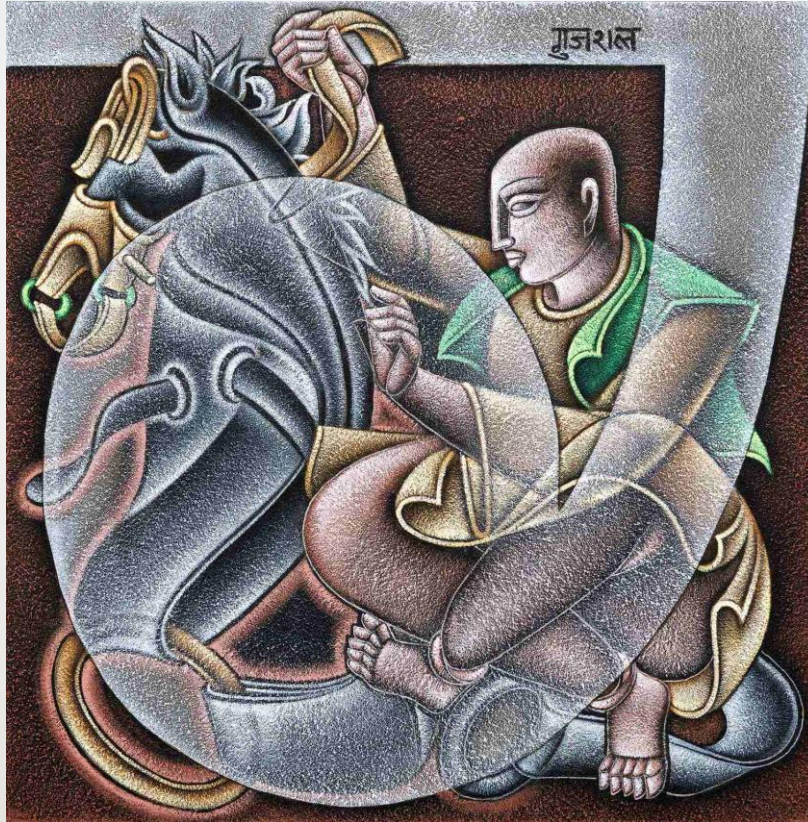


Shanti Dave uses layers of oil and encaustic paint that are sensitively textured to combine calligraphy with expressionist fervour in his artwork. Influenced by Devanagari and Nepalese scripts, his unique calligraphic strokes give the piece an aura of old mystery. Dave's distinctive fusion of visual art and the spirit of the written word is evident in the rich narrative tapestry that he creates in the painting using bold and expressive lines.

Shanti Dave

Untitled | 6.1" x 7.9" | Oil on Canvas | 2008

ENQUIRE NOW



A captivating blend of abstraction, surrealism and narrative, *Untitled* showcases Satish Gujral's recurrence of usual form and texture. The composition features a contemplative figure intricately interwoven with a dynamic, almost sculptural, horse, denoting strength and introspection. This piece reflects his deep exploration of human resilience and the harmonious interplay between man and beast, making it a profound testament to his artistic vision and cultural heritage.

Satish Gujral

Untitled | 24" x 24" | Acrylic on Canvas | 2018

ENQUIRE NOW



Shabir Hussain Santosh

Untitled | 48" x 78" | Acrylic on Canvas | 2024

ENQUIRE NOW



'Phulvari' blooms with the laughter of Raza's early years beneath the open skies of Mandla, Madhya Pradesh, where colours danced like memories. Each petal-like burst, mirrors the innocence of rural joy, the scent of flowery fields after rain, and the symphony of nature that sang to a young heart destined to hold beauty forever within.

S H Raza

Phulvari | 10.5" x 3.5" | Acrylic on Canvas | 2005

ENQUIRE NOW



Seema Kohli

Tree of Life | 48" x 72" | Acrylic and Ink on Canvas with 24ct Gold and Silver leaf | 2021

ENQUIRE NOW



Sujata Bajaj's "Fragments" embraces colour, rhythm, balance, and harmony, along with spirituality and serenity. Amalgamating crimson delicacies with geometric patterns interlaced with verses in Devanagari, it expresses her ancestral dichotomy and worldly outlook, which combines and captivates the insight of the soul, evoking the artist's creative vision and spiritual depth.

Sujata Bajaj

Fragments | 20" x 20" | Acrylic on Canvas

ENQUIRE NOW



Vinita Karim's artwork is a mosaic of hues and geometric patterns, with the gilt-leaf canvas merging tangibility with an ambulatory escapade. The crescent moon smoothly arches above the city, imparting a magical touch. The lack of populace fascinates the rich architecture, which celebrates urbanisation and antique vibrancy, this piece transforms ordinary landscapes into extraordinary, dreamlike vistas. Often arising from her experiences of diverse sojourns to cities of the world, the painting underscores an evocative essence of a place and space.

Vinita Karim

Infinite Glory | 36.5" x 55.5" | Embroidery on Dhaka Muslin | 2023

ENQUIRE NOW

WE ARE NOW ON ARTSY

Follow this link <https://www.artsy.net/show/sanchit-art-across-the-modern-line> and discover more Indian Artworks.



Sell or Swap

We acquire artworks of Indian modern masters and senior contemporaries, for the gallery collection. We can do an outright purchase or exchange it with another artwork. Should you wish to sell, or exchange, please get in touch for a no obligation valuation.*

Easy 4 step process

- Assessment • Valuation • Offer Acceptance & mode of sale • Logistics & compliance

*Terms and conditions apply.

For more information and enquiries, please:

- ✓ On a mobile device, click the button to get the prices now



- ✓ Or, please [click here to drop us an email quickly](#)

T +91-11-41408010 | **M** +91-9599-290620 | **E** info@sanchitart.in

Sanchit Art, 155 DLF South Court, Saket, New Delhi – 110017

10am – 6pm; Sunday's, by appointment only

www.sanchitart.in

Follow us

